

Standalone Scheduler EAR Building  
Oracle FLEXCUBE Universal Banking  
Release 12.87.06.0.0  
[May] [2020]



---

## Table of Contents

|   |     |
|---|-----|
| 1. BUILDING APPLICATION FOR SETUP ..... | 1-1 |
|---|-----|

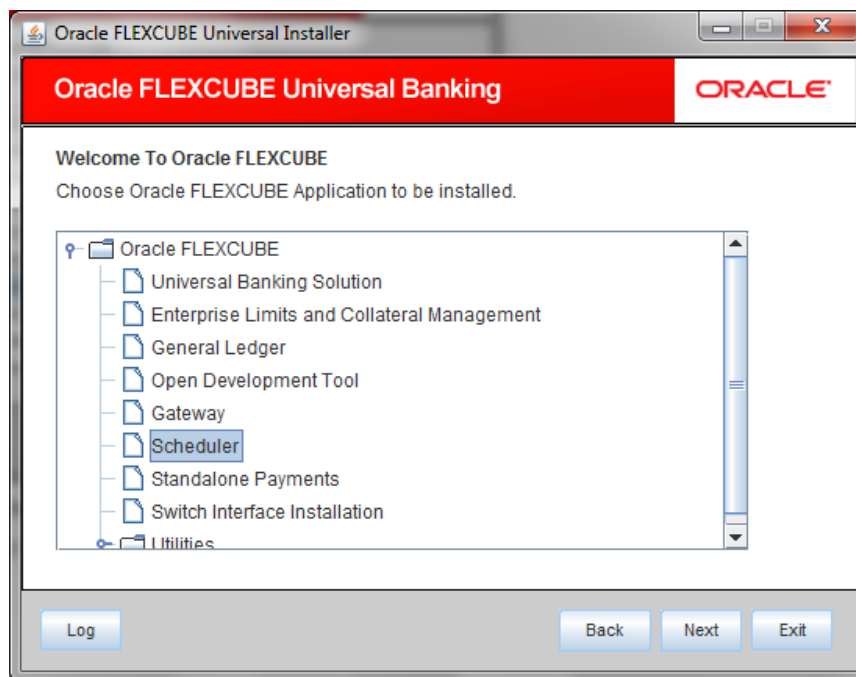
# 1. Building Application for Setup

The process of building EAR files includes the following steps:

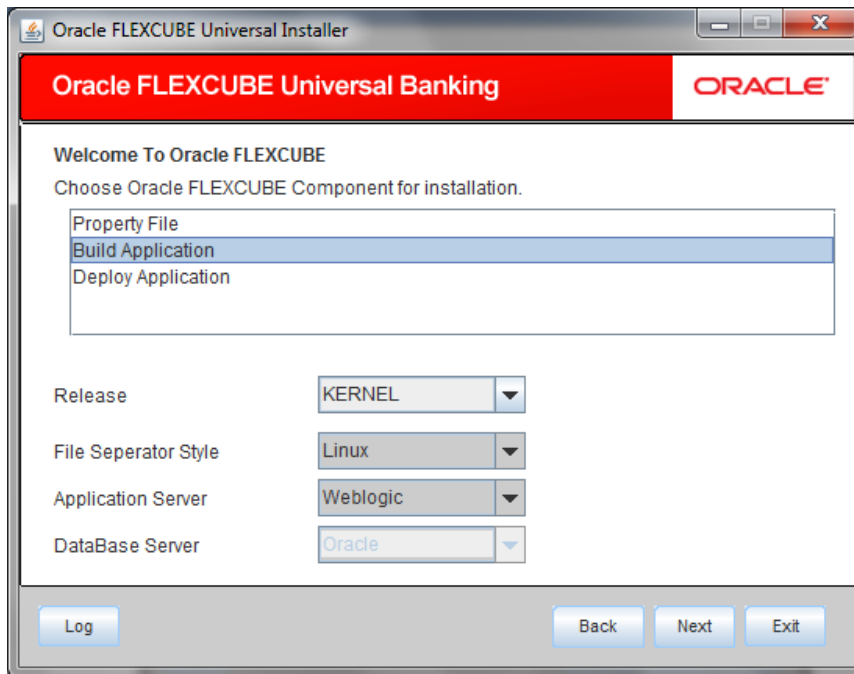
- Load property file
- Copy sources
- Compile sources
- Build source

To build the application for setup using the installer, follow the steps given below:

1. Double-click 'FCUBSInstaller.bat' batch file to launch Oracle FLEXCUBE Universal Installer. The following screen is displayed.
2. Click 'Next' and the following screen is displayed:



3. Select 'Scheduler'
4. Click 'Next' and the following screen is displayed:



Select 'Build Application' and specify the following details:

### **Operating System**

Select the release in which you are building the application from the adjoining drop down list.

### **Application Server**

Select the application server in which you are building the application from the adjoining drop down list.

### **Release**

Choose Release from the drop down.

5. Once you have specified the details, click 'Next' and the following screen is displayed:
6. Select the appropriate installation option. Provide schema details for validation in case of rolled up patch installation. For New Schema details are not enabled. Click 'Next'.

**Installation Type**

FC Home

☒ EAR Build ☐ EAR Build Rolled-up

Provide schema details for patch installation.

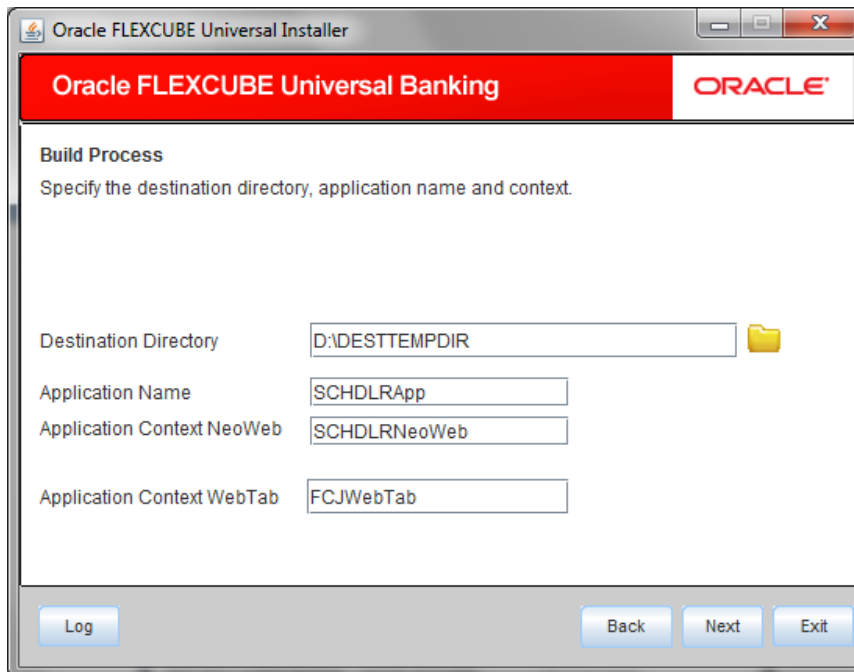
| Name                   | Value          |
|------------------------|----------------|
| Username               | FCUBS121       |
| Password               | ••••••••       |
| Service Name           | FC1202WI       |
| IP Address             | 10.184.149.177 |
| Port                   | 1521           |
| TNS Connect Descriptor | FC1202WI       |

7. Based on the FCHOME chosen, the valid list of deployable units are listed as shown in the next screen:

**Valid Patch List**

| No | Version    | Type    | Select                              |
|----|------------|---------|-------------------------------------|
| 1  | 12.1.0.0.0 | CONSOLE | <input checked="" type="checkbox"/> |
| 2  | 12.1.0.1.0 | PATCH   | <input type="checkbox"/>            |


Choose the required set of Main and Patch releases. Click Next. Following screen is shown.



8. Specify the following details:

#### **Destination Directory**

Specify the directory where the application should be setup. The installer will copy the source files from the source directory to the destination directory.

Use the directory icon  to browse and select the destination directory.

#### **Application Name**

Specify a name for the Application to be deployed.

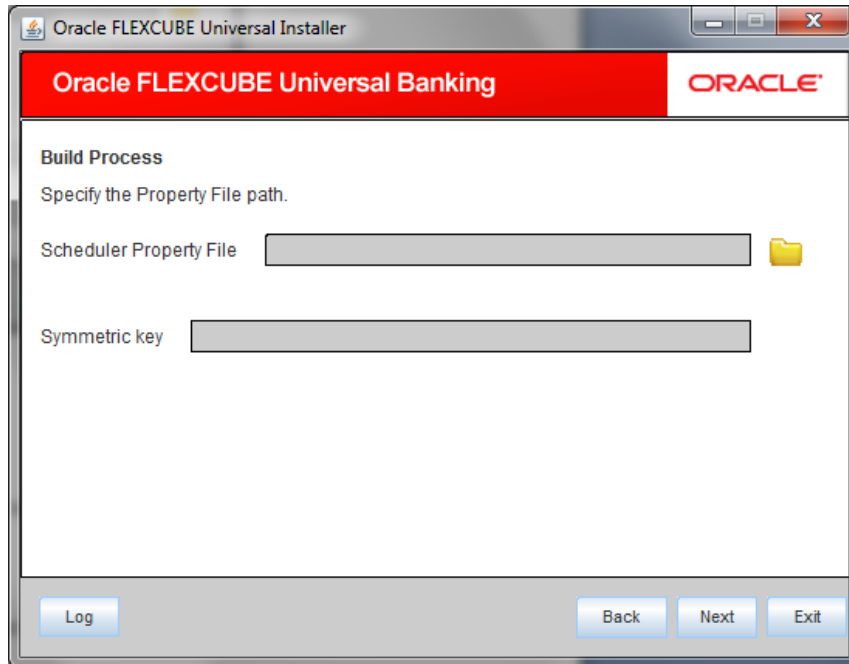
You cannot use special characters such as '.' (dot), ',' (comma), '\$' etc. However, you may use '\_' (underscore).

#### **Application Context**

Based on the Application type selected, the Installer displays the application context. However, you may modify the default value.


This information will be updated in 'application.xml'. In case of a WebLogic server, this will be updated in 'weblogic.xml'.

9. Click 'Next' and the following screen is displayed:



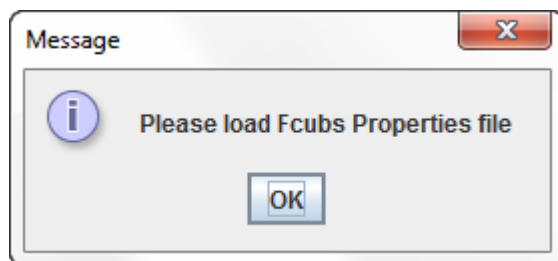
10. Specify the following details:

#### **Scheduler Property File**

Specify the location of the scheduler property file. You can use the directory button  to browse and select the directory.

The property file is required for EAR building.

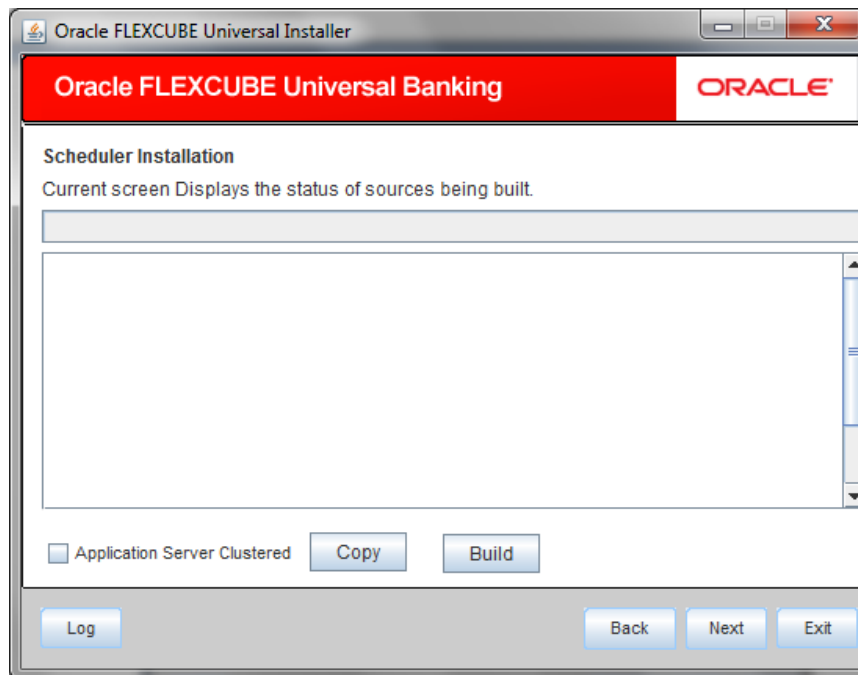
It is mandatory to load the property file. If you do not load a property file, the installer displays the following error message:



You need to load the property file to continue.

For OPSS =N value for Symmetric key will be loaded ,otherwise for OPSS =N Symmetric key value has to be entered .

11. Click 'Next' and the following screen is displayed:.



Copy the source using copy button.

The installer start building the EAR/WAR files, after the files are copied.



The compilation button is not available in EXEC mode of installation.

While copying the sources, the Installer copies all the plug-ins whether you have selected them or not. At this stage, the installer deletes the plug-ins that are not selected

If The EAR created is to be deployed in an Application server running in a clustered mode, the check box needs to check.

12. The Installer creates the EAR/WAR files in the destination directory, aAfter the successful build process.

The EAR file is available in selected EAR file location. If you have opted for BPEL, then FCBPELCIS.jar file is also available in the EAR file location.

In case of decentralized or hybrid setup, EAR files for the Host and WAR file for the Branch are be available in EAR file location.





Standalone Scheduler EAR Building  
[May] [2020]  
Version 12.87.06.0.0

Oracle Financial Services Software Limited  
Oracle Park  
Off Western Express Highway  
Goregaon (East)  
Mumbai, Maharashtra 400 063  
India

Worldwide Inquiries:  
Phone: +91 22 6718 3000  
Fax: +91 22 6718 3001  
[www.oracle.com/financialservices/](http://www.oracle.com/financialservices/)

Copyright © [2007], [2020], Oracle and/or its affiliates. All rights reserved.

Oracle and Java are registered trademarks of Oracle and/or its affiliates. Other names may be trademarks of their respective owners.

**U.S. GOVERNMENT END USERS:** Oracle programs, including any operating system, integrated software, any programs installed on the hardware, and/or documentation, delivered to U.S. Government end users are "commercial computer software" pursuant to the applicable Federal Acquisition Regulation and agency-specific supplemental regulations. As such, use, duplication, disclosure, modification, and adaptation of the programs, including any operating system, integrated software, any programs installed on the hardware, and/or documentation, shall be subject to license terms and license restrictions applicable to the programs. No other rights are granted to the U.S. Government.

This software or hardware is developed for general use in a variety of information management applications. It is not developed or intended for use in any inherently dangerous applications, including applications that may create a risk of personal injury. If you use this software or hardware in dangerous applications, then you shall be responsible to take all appropriate failsafe, backup, redundancy, and other measures to ensure its safe use. Oracle Corporation and its affiliates disclaim any liability for any damages caused by use of this software or hardware in dangerous applications.

This software and related documentation are provided under a license agreement containing restrictions on use and disclosure and are protected by intellectual property laws. Except as expressly permitted in your license agreement or allowed by law, you may not use, copy, reproduce, translate, broadcast, modify, license, transmit, distribute, exhibit, perform, publish or display any part, in any form, or by any means. Reverse engineering, disassembly, or decompilation of this software, unless required by law for interoperability, is prohibited.

The information contained herein is subject to change without notice and is not warranted to be error-free. If you find any errors, please report them to us in writing.

This software or hardware and documentation may provide access to or information on content, products and services from third parties. Oracle Corporation and its affiliates are not responsible for and expressly disclaim all warranties of any kind with respect to third-party content, products, and services. Oracle Corporation and its affiliates will not be responsible for any loss, costs, or damages incurred due to your access to or use of third-party content, products, or services.